

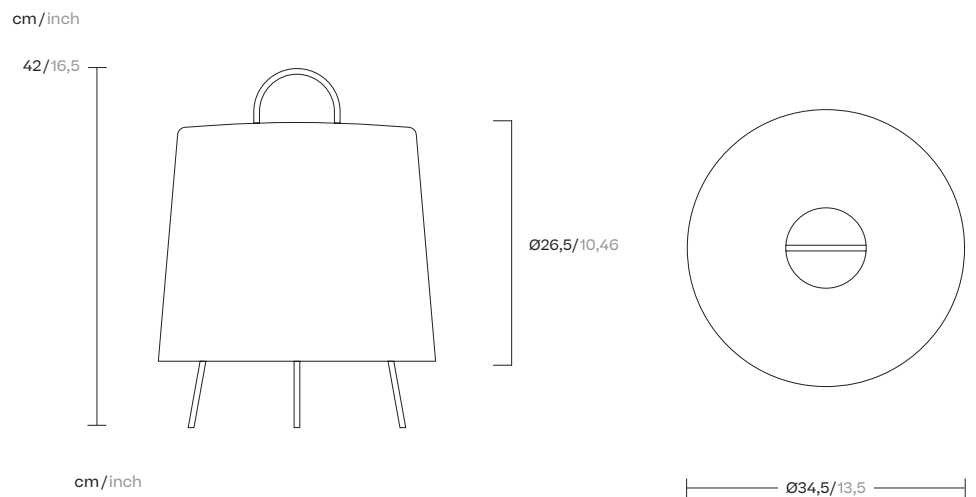
Mia,  
Table lamp L  
Assembly instructions

**kettal**

# Mia table lamp L

## Description

The lamp is built around an acid-treated glass diffuser which is protected by a large polypropylene lampshade. Both are held in place by a clever wire structure. One of Kettal wishes was to have the lamps completely waterproof, which was achieved – allowing for a wide range of applications and making it suitable for outdoor use.



## Information

---

### Warning

If the wire or flexible cord is damaged, it must only be changed by the manufacturer, their Service Dept. or qualified personnel in order to avoid risk.

### Cleaning Instructions

Use a soft damp cloth, with soap or neutral detergent. Do not use alcohol or other solvents.

This symbol on the product or its packaging indicates that it must not be treated as household waste. It should, in fact, be handed in at a recognised collection point for recycling electrical and electronic equipment. For more detailed information about the recycling of this product, please contact your local city office, your household waste disposal service or the shop where you purchased the product.

The luminaire can only be connected to power outlets with the same IP rating as the luminaire itself. This product is suitable for indoor and outdoor.

220-240V~50/60Hz (CE version) / 120V - 60Hz (UL version).  
It does not include bulb. It does not allow incandescent light bulb, obligatory low-energy light-bulb 15W. LED E27.  
Maximum height bulb 115 mm.

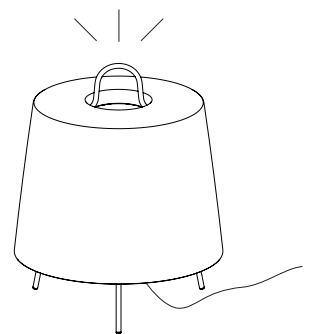
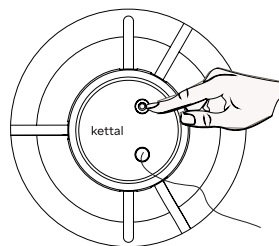
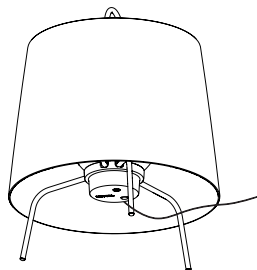
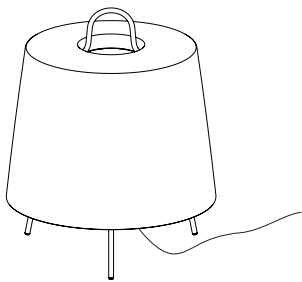


RoHS



## Switch On / Off

---

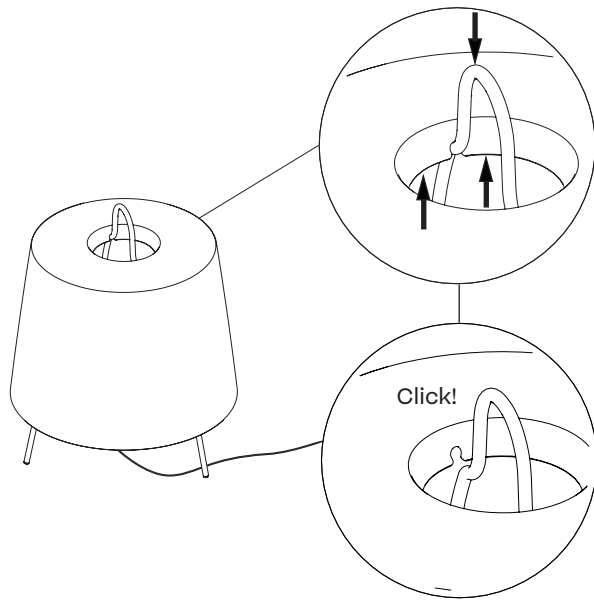


# Mia table lamp L

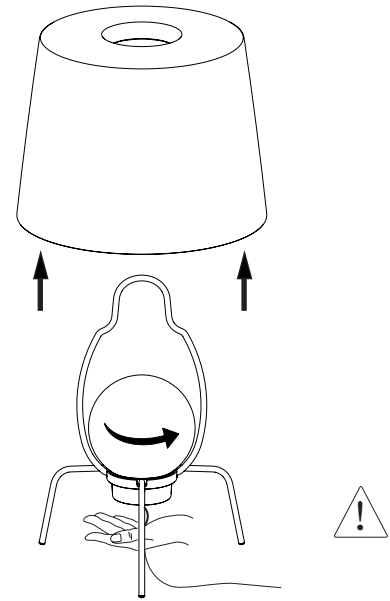


Warning! Be careful, please. Hold the base to unscrew it from the glass globe. Disconnect power supply before installation and change the bulb only when cold.

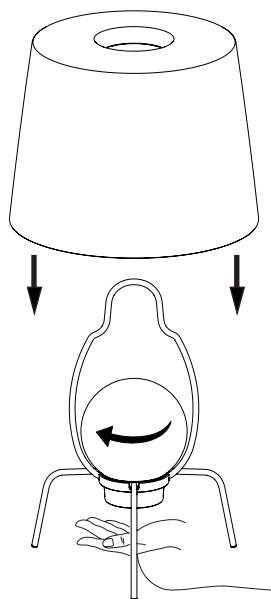
1



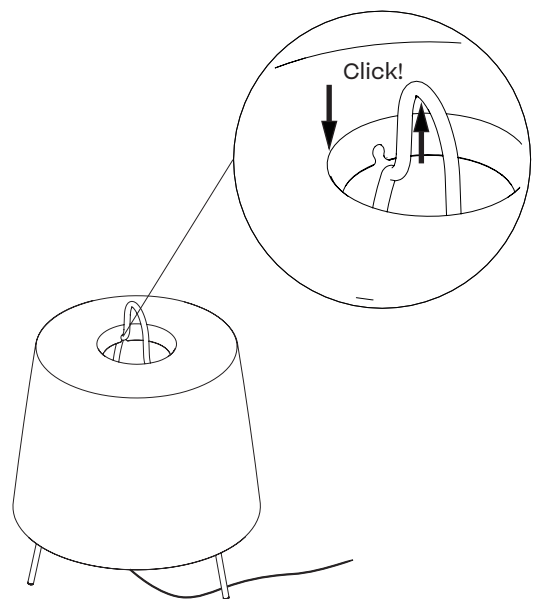
2



5



6

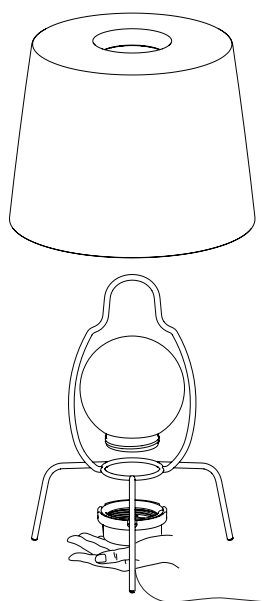


Designer  
Michel Charlot

Collection  
Objects

Reference  
KS5700900

3



4

