

Meteo

L Meteo Parasol

330x330

by Konstantin Grcic

kettal

L Meteo Parasol 330x330

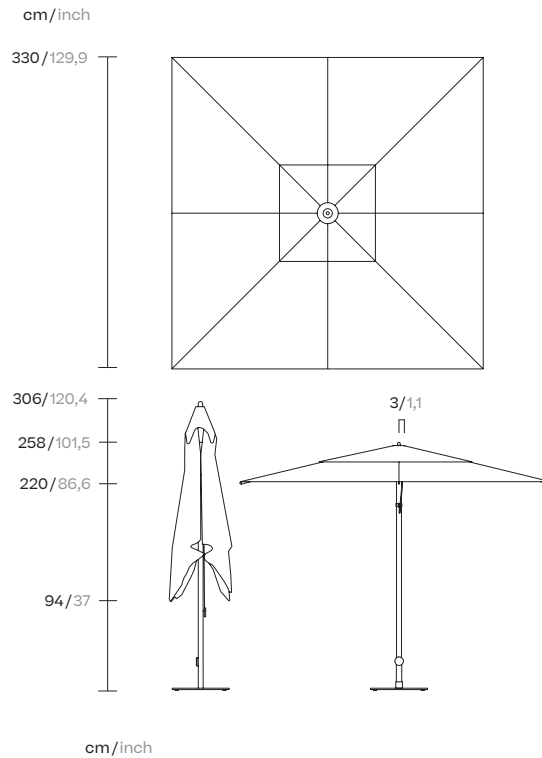
Designer
Konstantin Grcic

Collection
Meteo

Reference
KS5702700

1/6

METEO marks the beginning of a new collaboration between Kettal and Konstantin Grcic. It aims to explore the largely untapped design potential of modern parasols. Protection from direct sunlight is becoming a quintessential condition for our health and wellbeing. The increasing impact of parasols and other sunshade systems on the planning and furnishing of modern cityscapes, recreational resorts and private dwellings gives rise to the challenge of a renewed approach to this specialized product category.



kettal

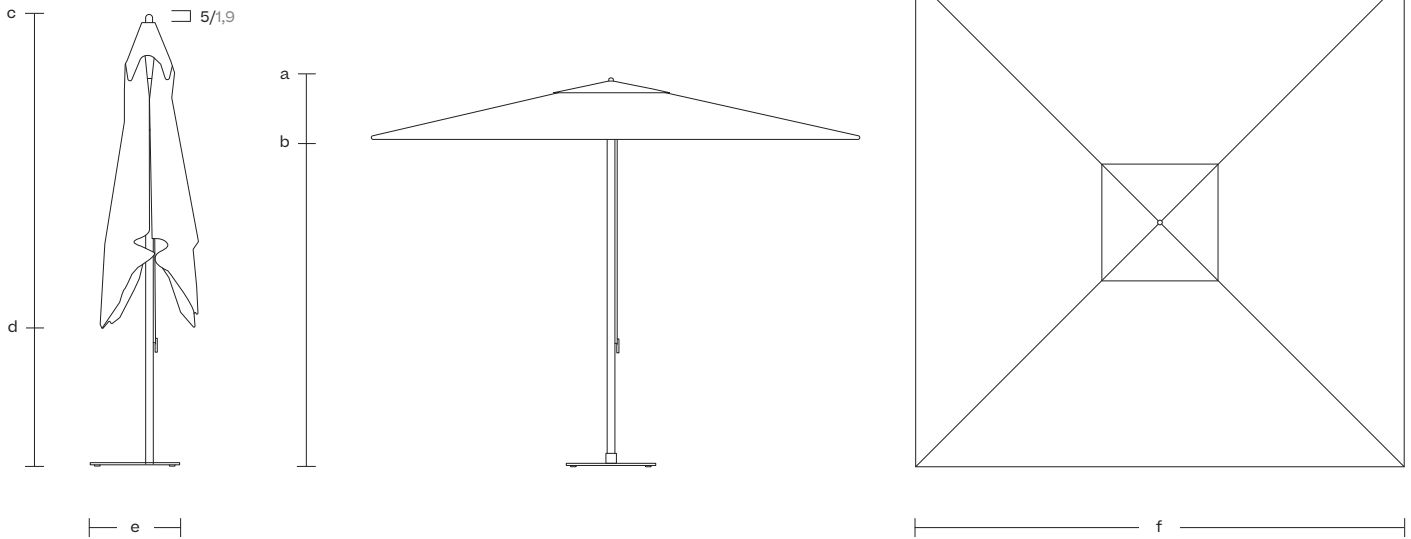
L Meteo Parasol 330x330

Designer
Konstantin Grcic

Collection
Meteo

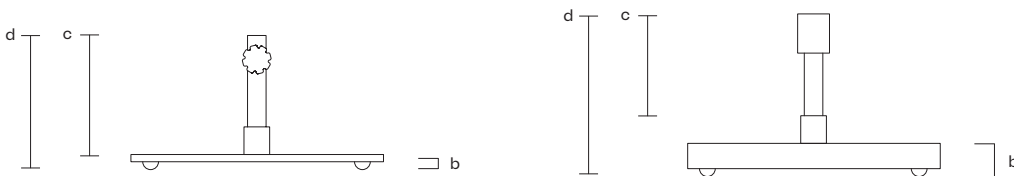
Reference
KS5702700

2/6



Parasol dimensions

Size (cm/in)	pole dimension (cm/in)	a mast height (open position) (cm/in)	b canopy clearance (cm/in)	c mast height (closed position) (cm/inch)	d table clearance (cm/in)	e closed parasol width (cm/in)	f flat to flat (opened) (cm/in)	g point to point (cm/in)	canopy coverage (m ² /ft ²)
330/129,9	5,2x5,2/2x2	310/122	214/84,2	260/102,3	670/263,8	20/7,9	330/129,9	470/185	10,9/4,3



Base dimensions

Type	Reference	weight (kg/lbs)	base size (cm/in)	b base height +/- 10 mm (cm/in)	c fixation part height (cm/in)	d total height +/- 10 mm (cm/in)
Base with wheels	369290007R	70/27,5	74x74/29,1x29,1	5/1,9	33/13	38/14,9
Concrete base	3692988C0	90/35,4	70x70/27,5x27,5	10,1/3,9	33,4/13,1	43,5/17,1



kettal

L Meteo Parasol 330x330

Designer
Konstantin Grcic

Collection
Meteo

Reference
KS5702700

3/6

Base with wheels



Concrete base parasol






Frame Colour Options

Terrain Coatings

				
Slate Stone 01C	Mysty Smoke 02C	Ash 03C	Bone 04C	Tuff 05C
				
Wet Stone 06C	Sand Dune 07C	Dry Clay 08C	Arabica 09C	Sepia 19C
				
Rose Canyon 16C	Blossom 20C	Ruby Dust 18C	Sunset Glow 17C	Terrarosa 15C
				
Terracotta 14C	Amber 13C	Ginger Root 12C	Desert Storm 11C	African Savannah 10C
				
Spring Meadow 28C	Kombu 29C	Forest Stream 27C	Sea Moss 26C	Glacier Ice 25C
				
Polar Sky 24C	Nightfall 23C	Indigo 22C	Wild Lupin 21C	
				
Galena 33C	Bronze 30C	Corten 31C	Manganese 32C	

Frame Colour Options

Aluwood

		
Atlantic White Cedar 930	Western Red Cedar 920	Smoked Wenge 910

L Meteo Parasol 330x330

Designer
Konstantin Grcic

Collection
Meteo

Reference
KS5702700

4/6

Open parasol blocking system



Pulley with Bela Rope



Fabric Colour Options

Terrain Elements No Laminate



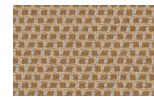
Charcoal
01T



Cumulus
02T



Snowcap
03T



Goldrush
04T



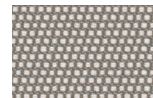
Tiger Eye
05T



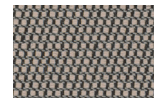
Karakum
06T



Moonstone
07T



Porous Grey
08T



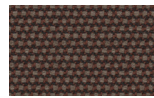
Fog
09T



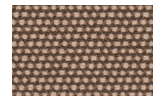
Raku
11T



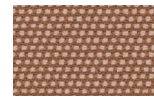
Cambium
12T



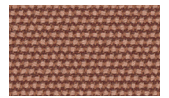
Clove
13T



Desert Rose
14T



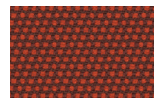
Pink Salt
15T



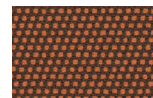
Pacific Dawn
16T



Acer
17T



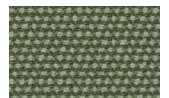
Firetail
18T



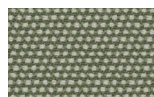
Glowing Ember
19T



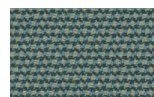
Peppercorn
20T



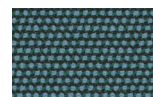
Heath
21T



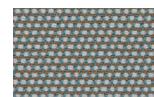
Sea Heart
22T



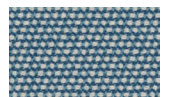
Rock Pool
23T



Tropic
24T



Skylark
25T



Nautica
26T



Blue Reef
27T



Cosmos
28T



Amethyst
29T

Meteo shade equipment is rigorously tested to withstand incredible forces of nature, KETTAL does not recommend or warranty the deployment or use of any collapsible shade equipment in wind conditions which exceed 45km/h - 25 MPH.

kettal

L Meteo Parasol 330x330

Designer
Konstantin Grcic

Collection
Meteo

Reference
KS5702700

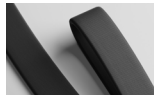
5/6

Parasol rope detail

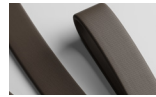


Piping Colour Options

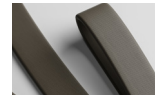
Parasol Fabric Piping



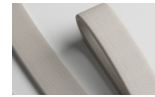
Black
310



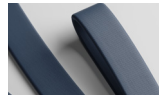
Brown
3371



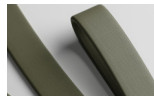
Marengo
3021



Grey
648



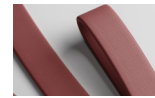
Blue
3750



Dark Green
934



Hal
1



Red
3858

Materials

Terrain Elements

Heavy Load 100.000 Cycles, Heavy Load Resistant 1000 Decitex, Kettalize-It, Resist U.V. En-581-4, Easy Clean, Abrasion, Resistance 30.000 Cycles, Quickdry

Terrain Fabrics

Heavy Load 100.000 Cycles, Heavy Load Resistant 1000 Decitex, Kettalize-It, Resist U.V. En-581-4, Easy Clean, Abrasion, Resistance 30.000 Cycles, Quickdry

Aluminium

Antioxy, Heavy Load, Resistant En-1421, Kettalize-It, Anti-Scratch, Easy Clean, Flame Retardant M1, Eco Friendly Ecoembes Recycling Process

Maintenance

Clean with mild soap using sponge or cloth. Be gentle while cleaning, do not scrub aggressively the fabric. Once cleaned please make sure you remove soap excess. In case of aggressive stains clean with diluted household bleach. Clean stains promptly. The longer it remains, more difficult will be to remove.

Once cleaned the fabric steam iron the fabric. Just use steam, be carefull NOT placing the iron directly in the fabric it will get damage.

Interior corner detail



L Meteo

Parasol

330x330

Designer
Konstantin Grcic

Collection
Meteo

Reference
KS5702700

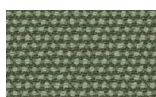
6/6

Fabric / Piping Colour Combinations

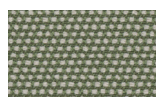
Terrain Elements No Laminate / Piping



Rosmary
MR1



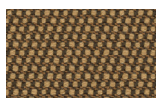
Heath
21T



Sea Heart
22T



Whole Clove
MR2



Tiger Eye
05T



Raku
11T



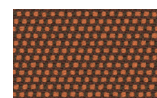
Cambium
12T



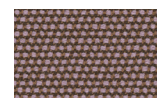
Clove
13T



Desert Rose
14T



Glowing Ember
19T



Amethyst
29T



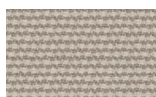
Mustard Grain
MR3



Goldrush
04T



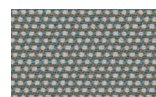
Karakum
06T



Moonstone
07T



Pink Salt
15T



Skylark
25T



Sea Salt
MR4



Snowcap
03T



Porous Grey
08T



Ground Pepper
MR5



Cumulus
02T



Fog
09T



Black Salt
MR6



Charcoal
01T



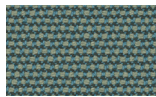
Peppercorn
20T



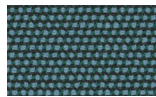
Cosmos
28T



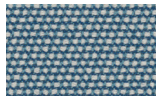
Poppy Seed
MR7



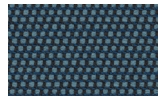
Rock Pool
23T



Tropic
24T



Nautica
26T



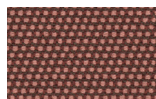
Blue Reef
27T



Rose Harissa
MR8



Pacific Dawn
16T



Acer
17T



Firetail
18T